

## Celebrate with Toshiba and discover the latest generation of market-leading notebooks.

20 years ago, Toshiba gave the world its first mass-market notebook PC. To mark two decades of innovation and market leadership in portable computing, Toshiba today proudly announces the next generation of advanced notebooks.

- Toshiba firsts** For 20 years, Toshiba's focus on mobility, innovation and quality has been the driving force behind the creation of today's world of mobile computing.
- Commitment to R&D** With an unmatched 6% of turnover re-invested in R&D, Toshiba continues to push forward the boundaries of mobile computing, creating ever more advanced portable technology to meet customers' needs.
- Excellence in quality** Toshiba is delivering the highest levels of quality and reliability; our highly-qualified engineers and our insistence on using only the best components mean Toshiba sets the standards to which others aspire.

- Stronger partnerships** Toshiba believes in building long-term relationships with business partners – partnerships built on quality, value and service that stand the test of time.

This unique heritage has made Toshiba the undisputed market leader, ensuring superlative products and continuing to drive forward our vision for the ubiquitous networked society.

[www.toshiba-europe.com/20years](http://www.toshiba-europe.com/20years)

# 1985



# 20 LEADING YEARS MOBILE COMPUTING TOSHIBA

# 2005



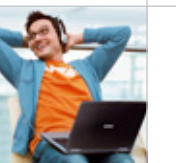
### SATELLITE/SATELLITE Pro L10

**Exceptional value in a lightweight design.**

- Powered by the Intel® Centrino™ mobile technology featuring the latest Pentium® M processor or the Intel® Celeron® M processor for the perfect balance between proven mobile processing technology and exceptional value
- Gives you instant multimedia on the large 15" XGA TFT screen together with SRS® TruSurround XT™ technology for rich audio sound, plus multimedia buttons for one-touch CD/DVD/MP3 player control
- Enjoy all-in-one convenience with Toshiba's ConfigFree™ for easy management of wireless and wired network connections and Microsoft® Office OneNote 2003™ for intuitive information management
- Steek, anthracite design eases your entry into the world of mobile computing

Weighing from just 2.67 kg

Satellite



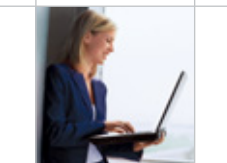
### Satellite/Satellite Pro M40X

**Mobility made easy with high-end digital entertainment.**

- Choose mobility with either Intel® Celeron® M or Intel® Pentium® M processor featuring the latest Pentium® M processors providing maximum power, enhanced performance and ultimate reliability
- Experience mobile cinema and multimedia entertainment at its finest with a large 15.4" WXGA TFT display
- Enjoy enhanced mobile productivity from the start with preloaded software, including Microsoft® XP Home Edition or Microsoft® XP Professional, Microsoft® Office OneNote™ 2003 and Toshiba ConfigFree™ for easy mobility management
- Take advantage of advanced connectivity features such as wired Ethernet LAN, i.LINK®, 3 USB ports and 6-in-1 Bridge Media slot for SD™, SmartMedia™, Memory Stick™, Memory Stick PRO™, MultiMediaCard™ and xD-Picture Card™
- Go mobile in style with the lightweight, silver Satellite/Satellite Pro M40X, designed to make a big visual impact.

Features 15.4" widescreen TFT display

Satellite



Express Media Player for instant-on entertainment!

### SATELLITE M40

**Experience state-of-the-art mobile entertainment with instant-on multimedia.**

- Enjoy high-performance mobility in a stylish design, featuring Intel® Centrino mobile technology and the latest Intel® Pentium® M processors
- Experience the excitement of 3D graphics and state-of-the-art gaming thanks to the powerful ATI™ MOBILITY™ RADEON® X300 chipset with up to 128 MB video memory and Microsoft® DirectX® 9.0 support
- Get the best in mobile multimedia with amazing viewing quality on the 15.4" Toshiba TruBrite display (selected models), backed by SRS® TruSurround XT™ technology and Harman Kardon® stereo speakers
- Features an Express Media Player button for instant-on access to CD/DVD playback without the need to boot the Windows® operating system
- Expansion is quick and easy courtesy of the 6-in-1 Bridge Media slot, 3 USB ports, i.LINK®, PC Card support

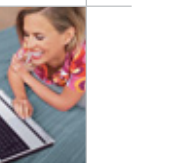
### SATELLITE M60

**The stylish 17" widescreen multimedia centre.**

- Captivating multimedia entertainment in a stylish, sunlit copper case for eye-catching mobility
- Delivers exceptional mobile performance thanks to the latest Intel® Centrino™ technology and amazing flexibility via an integrated DVD Super Multi (Double Layer) drive for full multimedia recording and playback of all CDs and DVDs
- Enjoy enhanced mobile productivity from the start with preloaded software, including Microsoft® XP Home Edition or Microsoft® XP Professional, Microsoft® Office OneNote™ 2003 and Toshiba ConfigFree™ for easy mobility management
- Take advantage of advanced connectivity features such as wired Ethernet LAN, i.LINK®, 3 USB ports and 6-in-1 Bridge Media slot for SD™, SmartMedia™, Memory Stick™, Memory Stick PRO™, MultiMediaCard™ and xD-Picture Card™
- Go mobile in style with the lightweight, silver Satellite/Satellite Pro M40X, designed to make a big visual impact.

17" widescreen multimedia

Satellite



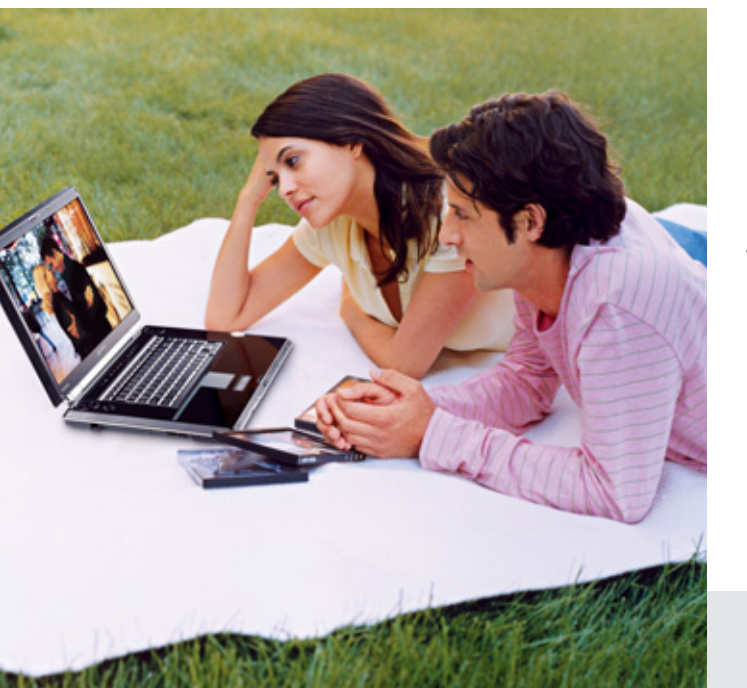
### QOSMIO F20 / G20

**Qosmio – The art of smart entertainment.**

- Qosmio brings together high-quality TV, HDD recording and playback, superlative audio and powerful mobile computing to create an all-in-one mobile, digital entertainment system
- Immersive video graphics come to life with the QosmioEngine, the innovative video system for amazingly bright, clear and crisp images in vivid colour
- Outstanding viewing with life-like images and the wide viewing angle of the Toshiba TruBrite 17" or 15.4" TFT display provide users with cinematic video quality, enhanced multimedia and superior 3D gaming
- Enjoy a rich, powerful audio experience thanks to SRS® TruSurround XT™ technology and industry-leading Harman Kardon® stereo speakers
- Digital entertainment at the touch of a button is yours with the intuitive design and features of the QosmioPlayer and AV control buttons
- Be creative with value-added software and the latest in optical drive technology, making it easier for you to create personal multimedia collections and share the best of your digital universe

4-in-1 entertainment system: TV, HDD/DVD, audio and PC

Qosmio



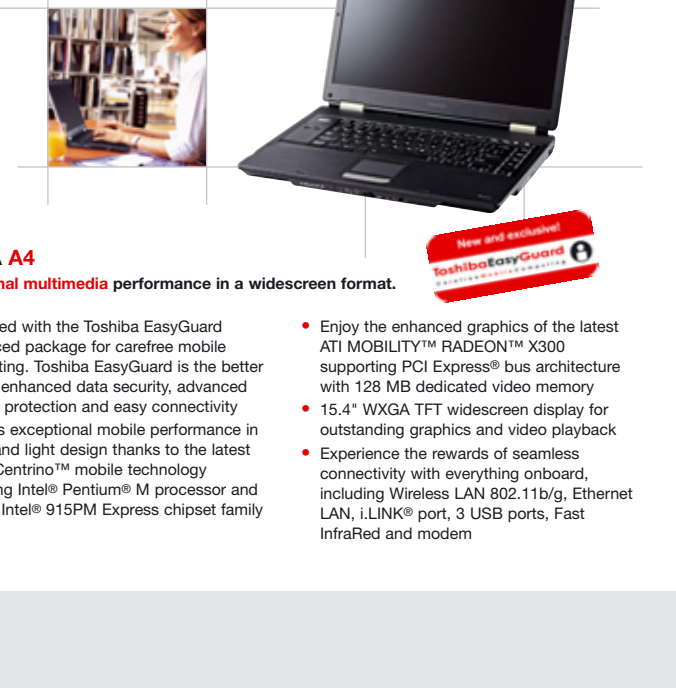
### TECRA A3

**The intelligent choice for business computing.**

- Equipped with the Toshiba EasyGuard Advanced package for carefree mobile computing, Toshiba EasyGuard is the better way to enhanced data security, advanced system protection and easy connectivity
- Benefit from reduced costs for evaluating, deploying, and training users on new models with the consistent software image, long lifecycles, backwards compatible common docking solution and options
- Enjoy exceptional mobile performance in a thin and light design thanks to the latest Intel® Centrino™ mobile technology including Intel® Pentium® M processors and Mobile Intel® 915 Express chipset family
- Provides business value with a 15" TFT display and professional video support for screen presentations with one-touch presentation button, RGB and TV-out (S-Video) ports
- Experience the rewards of seamless connectivity with everything onboard, including Wireless LAN 802.11b/g, Ethernet LAN, i.LINK® port, 3 USB ports, Fast InfraRed and 6-in-1 Bridge Media support

New and enhanced Toshiba EasyGuard

TECRA



New and enhanced Toshiba EasyGuard

### TECRA A4

**Exceptional multimedia performance in a widescreen format.**

- Enjoy the enhanced graphics of the latest ATI MOBILITY™ RADEON™ X300 supporting PCI Express® bus architecture with 128 MB dedicated video memory system protection and easy connectivity
- Delivers exceptional mobile performance in a thin and light design thanks to the latest Intel® Centrino™ mobile technology including Intel® Pentium® M processor and Mobile Intel® 915PM Express chipset family
- Enjoy the enhanced graphics of the latest ATI MOBILITY™ RADEON™ X300 supporting PCI Express® bus architecture with 128 MB dedicated video memory system protection and easy connectivity
- 15.4" WXGA TFT widescreen display for outstanding graphics and video playback
- Experience the rewards of seamless connectivity with everything onboard, including Wireless LAN 802.11b/g, Ethernet LAN, i.LINK® port, 3 USB ports, Fast InfraRed and modem

PA number	Description	Satellite L10	Satellite M40	Satellite M40X	Satellite M60	Qosmio F20	Qosmio G20	Satellite Pro L10	Satellite Pro M40X	Tecra A3	Tecra A4
<b>POWER</b>											
PA2521E-2ACA	AC Adapter - 15 V DC, 6 A, 90 W - black										
PA3237E-2ACA	AC Adapter - 15 V DC, 8 A, 120 W - black										
PA3378E-1ACA	AC Adapter - 15 V DC, 5 A, 75 W, 3-pin - black										
PA3396E-1ACA	AC Adapter - 19 V DC, 3.42 A, 65 W, 3-pin - black										
PA3432E-1ACA	AC Adapter - 19 V DC, 3.95 A, 75 W, 3-pin - black										
PA3285U-2BR5	Battery - Li-Ion, 6 cell, 4400 mAh - black										
PA3395U-1BR5	Battery - Li-Ion, 8 cell, 4300 mAh										
PA3399U-1BR5	Battery - Li-Ion, 6 cell, 4300 mAh										
PA3420U-1BR5	Battery - Li-Ion, 8 cell, 4300 mAh										
PA3431U-1BR5	Battery - Li-Ion, 8 cell, 4300 mAh										
PA3456U-1BR5	Battery - Li-Ion, 6 cell, 4400 mAh										
PA3357U-1BR5	High capacity battery - Li-Ion, 12 cell, 8800 mAh										
PA3400U-1BR5	High capacity battery - Li-Ion, 12 cell, 8600 mAh										
PA3091E-1CHG	Battery charger - 2 batteries supported										
PX1188E-1NPO	Notebook car adapter - 120 W, 15 V, 8 A - black										
PX1189E-1NPO	Notebook car adapter - 120 W, 19 V, 6.3 A - black										
<b>EXPANSION</b>											
PA3311U-1M25	256 MB Memory PC2100 / PC2700 DDR SODIMM (333 MHz)										
PA3311U-2M25	256 MB Memory PC2100 / PC2700 DDR SODIMM (333 MHz) (for Alviso)										
PA3312U-1M51	512 MB Memory PC2100 / PC2700 DDR SODIMM (333 MHz)										
PA3312U-2M51	512 MB Memory PC2100 / PC2700 DDR SODIMM (333 MHz) (for Alviso)										
PA3313U-2M1G	1024 MB (1GB) Memory PC2100 / PC2700 DDR SODIMM (333 MHz) (for Alviso)										
PA3389U-1M25	256 MB Memory PC2-4300 DDR2 (533 MHz)										
PA3412U-1M51	512 MB Memory PC2-4300 DDR2 (533 MHz)										
PA3411U-1M1G	1024 MB (1 GB) Memory PC2-4300 DDR2 (533 MHz)										
PX1160E-1M25	USB Memory 256 MB										
PX1161E-1M51	USB Memory 512 MB										
PX1207E-1M1G	USB Memory 1 GB										
<b>DRIVES</b>											
PA3109U-1FDD	External USB FDD - 1.44 MB - black										
PA3401U-1DVD	External DVD-ROM Drive - 24x / 24x / 12x / 8x - USB (w/o AC Adapter) - black										
PA3402E-1DV2	External DVD Super Multi Drive										
<b>COMMUNICATION</b>											
PA3363E-1MPC	Wireless LAN Mini PCI Card - 802.11g										
<b>CONNECTIVITY</b>											
PA3314E-1PRP	Advanced Port Replicator III										
PX1173E-1PRP	USB 2.0 Port Replicator II (EU) with network port										
<b>CARRY CASES</b>											
PX1184E-1NCA	Backpack										
PX1186E-1NCA	Leather Case										
<b>DESK BASED</b>											
PX1172E-1NAC	Kensington Micro Saver										

## Why choose Toshiba?

- Best-in-class quality.** Toshiba sets the standard for delivering reliable, high-quality products. After 20 years of leadership in mobile computing, Toshiba offers unrivalled manufacturing experience and in-depth product knowledge, enabling customers to choose Toshiba with complete confidence. Our component testing programmes incorporate the most stringent quality control checks. Toshiba's commitment to quality also extends to impeccable customer service and long-term product support.
- Unique innovation.** Toshiba's success is anchored by a proven ability to develop cutting-edge technologies. Systems designed by Toshiba lie at the heart of many notebooks on the market today, while unprecedented R&D investment will ensure advances for years to come. Over the past 20 years, industry breakthroughs have included the first notebook to feature onboard wireless connectivity and the development of the lithium-ion battery. More recent Toshiba innovations are revolutionising digital convergence.
- Trend-setting design.** Toshiba has a long heritage of delivering award-winning design. All Toshiba systems are created by in-house designers and Toshiba products regularly win prestigious design and technology awards. Everything we do is about combining style with maximum functionality. User-friendly features combine effortlessly with ultra-lightweight cases and compact dimensions. These are status symbol notebooks, a pleasure to own and to be seen with.

Toshiba is the best choice for advanced mobile computing.

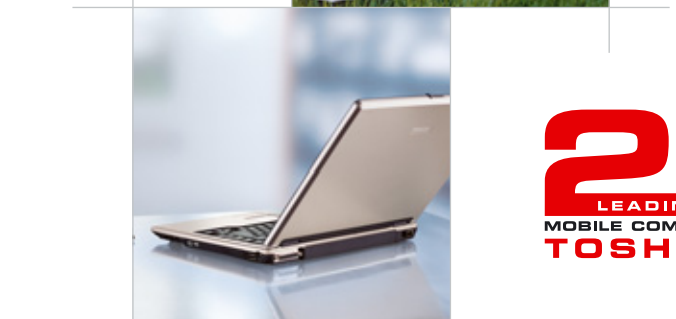
Dealer stamp

Go online at: [computers.toshiba-europe.com](http://computers.toshiba-europe.com)

Find out more: For further information please contact your nearest Toshiba Authorised Reseller.

## PRODUCT GUIDE

See inside for the Toshiba range of mobile solutions and options.



Toshiba recommends Microsoft® Windows® XP

Go online at: [computers.toshiba-europe.com](http://computers.toshiba-europe.com)

Find out more: For further information please contact your nearest Toshiba Authorised Reseller.

July 2005

20 LEADING YEARS MOBILE COMPUTING TOSHIBA

TEG, July 2005. All No. PG, NB, DT/05E. Microsoft and Windows are either registered trademarks or trademarks of Microsoft Corporation in the United States and/or other countries. All trademarks are acknowledged. Product design, specifications and colours are subject to change without notice and may vary from those shown. Errors and omissions excepted.

